



delivery & assembly

WE PROVIDE YOU WITH A FULL-SERVICE SOLUTION!

Delivery and assembly present the most attractive business segment for us as we are able to offer a complete development solution for generator systems including:

- Delivery
- full installation and erection
- assembly of all generator parts

For example, we have successfully completed the erection of 195 MVA hydro generator at the Slovenian reversible power plant Avce.

Montech performed complete assembly (including rotor core stoke and winding) and commissioning.

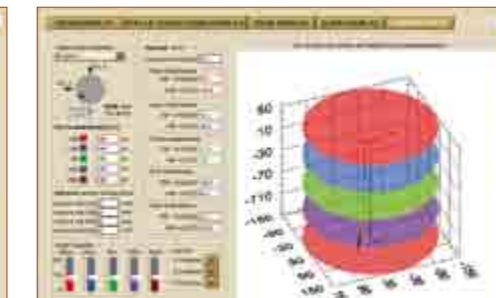
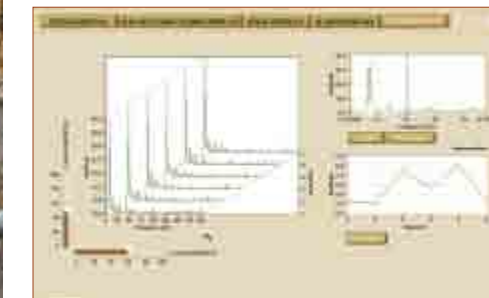
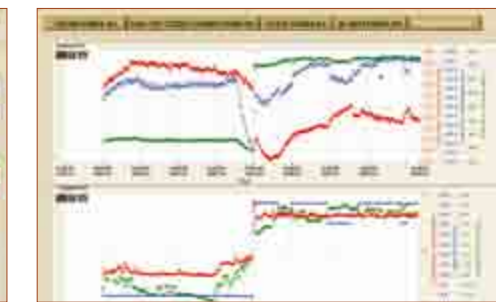
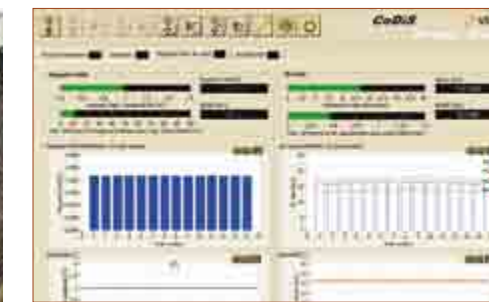
This was the largest regional assembly project in the last 5 years and based on the scope of this very specific assignment (due to generator's AC excitation), we are capable of taking on any hydro generator and turbo generator assembly project. We are capable of putting together large assembly teams allowing us to perform generator assembly of any size.

To assure optimal working conditions, each electrical system requires continual professional care. Throughout its lifetime, electrical systems require comprehensive maintenance including:

- Services (scheduled and emergency)
- Diagnostics and repair
- Outages / overhauls
- Revision and refurbishment
- Modernization and optimization
- Electrical and mechanical testing
- Spare parts manufacturing
- Technical support

Montech team is highly skilled for execution of all of the above-mentioned professional

services. Timely inspection and replacement of vital parts are crucial for maintaining optimal performance and assuring high operational reliability. Our maintenance approach is based on assessment of complete electrical system as a whole and mapping out the most effective solutions for safe and optimum performance with maximized life expectancy. Over the last two years, we have serviced and maintained many generators and motors of all sizes, from 15 to 730 MW. Our maintenance can be performed through scheduled outage, emergency intervention (including diagnostics and repair) or through continual maintenance program which guarantees continual or periodic presence of our professionals on location.



monitoring

PREDICT YOUR MECHANICAL BEHAVIOR AND LOWER YOUR REPAIR COSTS!

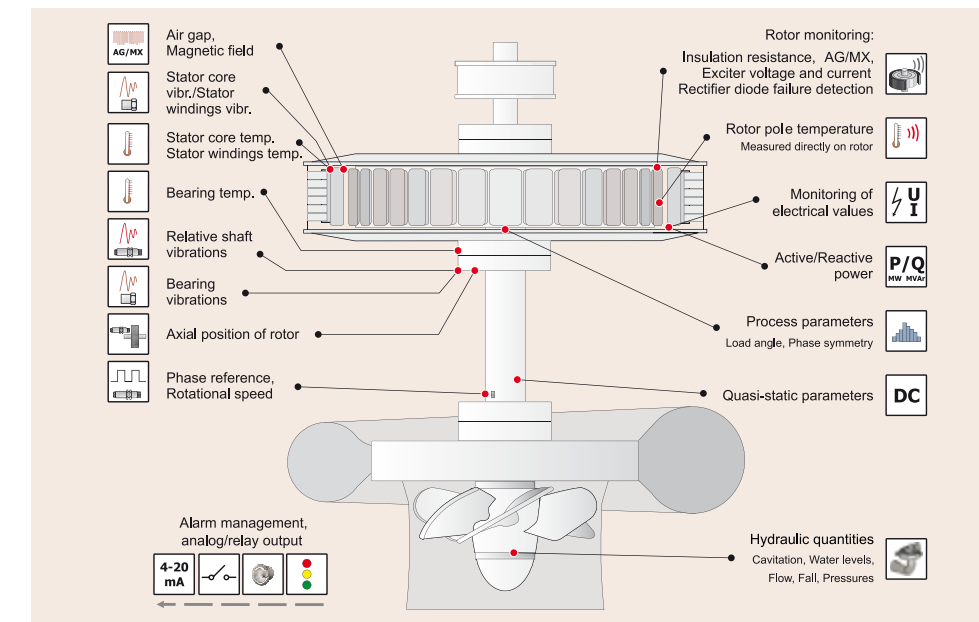
In collaboration with our Croatian strategic partner Veski, we offer one of the most comprehensive monitoring solutions in the world. Our online monitoring systems presents the latest and the most accurate way to understand and predict mechanical behavior of your operating system. Our monitoring systems can be installed on any of the vital components of your electrical system and therefore can ensure continuous monitoring of whole power plant's exploitation. Their greatest characteristic lays in their predictive capability for malfunctions and identification of irregularities in system behavior. This can significantly improve repair planning and

scheduling while preventing additional damage of internal system components.

Our monitoring systems include:

- Vibration monitoring
- Electrical parameters monitoring
- Process parameters monitoring (temperatures, pressures, flow etc.)

Our systems include continuous measurement, trending and database creation of all measured data and are implemented in most major powerplants in the region.



consulting

CHOOSE SKILLED AND PROFESSIONAL ENGINEERING PARTNER!

Regardless of the scope of the project, you can turn to us with confidence. Our seasoned engineering team offers wide range of high-quality consulting services for your high-voltage electrical systems:

- Diagnostics
- Revitalization and forecasting
- Technical documentation drafting
- Power efficiency optimization studies
- Instructions for assembly, erection and maintenance
- Supervision and guidance
- Spare parts procurement
- Training



MONTECH is a full service engineering company

offering high-quality technical services in the field of energetics. Our expertise competently covers all high-voltage electrical systems including:

- hydro generators
- turbo generators
- high-voltage (HV) motors and
- direct current (DC) motors

Our services are divided in four segments:

1 DELIVERY & ASSEMBLY

2 MAINTENANCE

3 MONITORING

4 CONSULTING

why? MONTECH choose wisely!

Due to our extensive background and vast global experience in the field, there are many advantages of choosing us as your new engineering partner:

- We are a modern, forward thinking professional organization with the pulse on the latest cutting edge advancements in the global world of energetics.
- We service power plants of all types and sizes - MONTECH has the ability to service, repair, deliver and install any type/size electrical motor and generator.
- We are able to deliver full-service solution for your electrical systems. Our comprehensive engineering principles will help you achieve optimum working conditions while maximizing life spans of your operating equipment.
- We are an ISO-certified EU company and therefore comply with all EU regulations.

CONTACT INFO:

MONTECH d.o.o. Company Headquarters:

ADDRESS: Cesta krških žrtev 135c, Krško, Slovenia
 TELEPHONE: + 386 (0)7 62 09 791
 FAX: + 386 (0)7 62 09 792
 E-MAIL: info@montech.si
 WEB: www.montech.si



www.montech.si

MONTECH
Monitoring Technologies & Maintenance